



# IPM MICROSOFT PROJECT INTEGRATION

## WHAT DOES IPM MICROSOFT PROJECT INTEGRATION DO?

IPM is designed to operate as a standalone Project Management solution within Microsoft Dynamics CRM® with the ability to be integrated with Microsoft Project®. IPM Microsoft Project Integration facilitates the exchange of project tasks between IPM and MS Project® in order to provide quicker and more convenient access to information across the Microsoft applications.

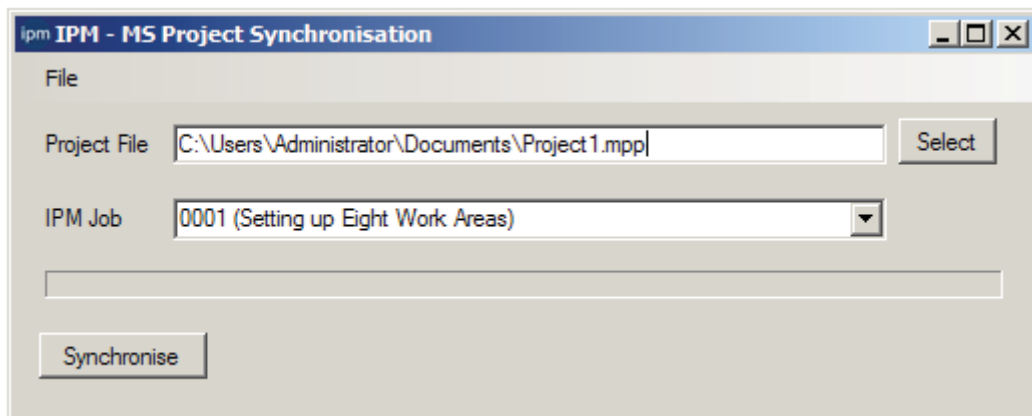
## KEEP YOUR PROJECT SYSTEM AND UPGRADE YOUR PROJECT MANAGEMENT

With IPM Microsoft Project® Integration you don't need to go through the process of changing or upgrading your project scheduling system in order to have IPM Project Management installed and integrated. This means less time and money is spent on the implementation and quicker software adoption by the staff.

## IPM MICROSOFT PROJECT® SYNCHRONISATION DETAILS

### MICROSOFT PROJECT SYNC DETAILS

IPM/MS PROJECT COMPONENT	Synchronisation details
Description	2 way Sync
Actual Start Date	2 way Sync
Actual Finish Date	2 way Sync
Start Date	2 way Sync
End Date	2 way Sync
Duration	2 way Sync
Percent Complete	2 way Sync



[www.IPMGlobal.net](http://www.IPMGlobal.net)

## CONTACT

Asia Pacific: + 1800 878 648

North America: +1 720 575 6072

Email: [info@IPMGlobal.net](mailto:info@IPMGlobal.net)

Email: [infoNA@IPMGlobal.net](mailto:infoNA@IPMGlobal.net)

