




# Integration for Oracle's PRIMAVERA P6

For IPM Project Management



www.ipmglobal.net

-  Do you manage projects with multiple schedule activities?
-  Do you need to track and record project expenses against your schedule?
-  Do you want to view all of your project information in the one place?

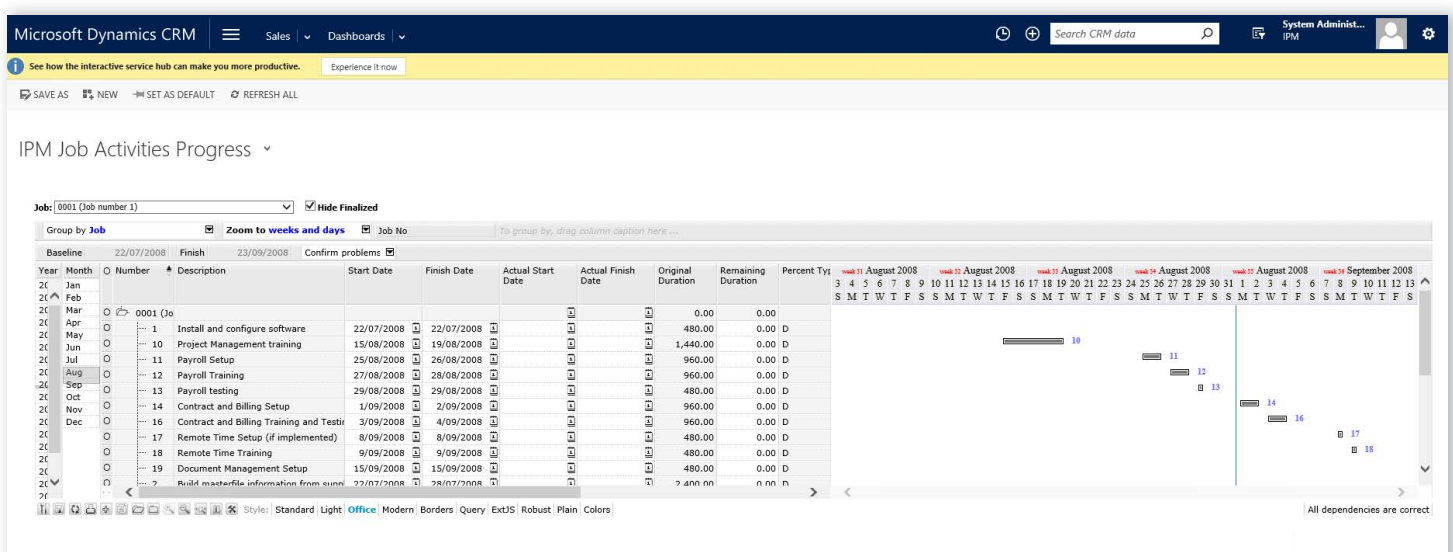
## WHAT DOES PRIMAVERA P6 INTEGRATION DO?

Further extend your project management capabilities with IPM's new integration tool for Oracle® Primavera P6. Integration with Primavera P6 is an additional product available in the IPM suite for those wishing to extend both their IPM and Primavera capabilities. IPM users without any scheduling skills can progress activities and record actual costs.

With Primavera P6 integration for IPM the two systems complement each other and ensure you always have a 360° view of your project.

## PRIMAVERA P6 INTEGRATION NOW GIVES YOU THE ABILITY TO:

- Synchronise job activity information between Primavera P6 and IPM
- Effectively progress schedule activities and completion dates in IPM
- Update labour, equipment, purchase order and subcontract information for each P6 activity in IPM
- Synchronise this information back to Primavera P6 to accurately record and track expenses information for your project



View all of your project and job data in the one place, and all edits made will update in Primavera P6.

# Integration for Oracle's PRIMAVERA P6

For IPM Project Management



ipmGlobal

www.ipmglobal.net

| Include?                            | P6 Project             | IPM Job                      |
|-------------------------------------|------------------------|------------------------------|
| <input checked="" type="checkbox"/> | 462 (Lincoln Hospital) | 0002 (Springwood M1 upgrade) |

| IPM Job                      | P6 Project             |
|------------------------------|------------------------|
| 0001 (Clem 7 tunnel)         | 556 (Edison High)      |
| 0002 (Springwood M1 upgrade) | 462 (Lincoln Hospital) |
| ▶*                           |                        |

- 432 (Innovative Construct)
- 433 (Infrastructure)
- 434 (Facilities)
- 436 (Corporate)
- 437 (Roads & Bridges)
- 438 (Airports)
- 439 (Ports & Harbors)
- 440 (Water/Waste)
- 442 (Rail)
- 444 (Education)
- 445 (Commercial)
- 449 (Project Controls)
- 450 (General Counsel)
- 451 (Estimating)
- 452 (Planning)
- 453 (Cost Controls)
- 454 (Risk Analysis)
- 455 (Admin)
- 456 (MIS)
- 460 (Industrial)
- 461 (Templates)
- 462 (Lincoln Hospital)
- 467 (Proposed Project C-1)
- 469 (Proposed Project HC1)
- 488 (Transportation)
- 496 (Health Care)
- 515 (Harbour Pointe)
- 532 (Process)
- 534 (Manufacturing)
- 553 (Lofty Heights)

Link project data from Primavera P6 to IPM Job data for a complete view of your activities

CONTACT

Asia Pacific: + 1800 878 648  
Website: [www.IPMGlobal.net](http://www.IPMGlobal.net)  
Email: [info@IPMGlobal.net](mailto:info@IPMGlobal.net)

